



Wuhan NewEast Biosciences Co.Ltd

Email:neweastbio@126.com

Web:www.neweastbio.com.cn

Tel:027-87561033

Active Rheb

Catalog Number: 26910

Gene Symbol: RHEB

Description: Anti-Active Rheb Mouse Monoclonal Antibody

Background: Small GTPases are a super-family of cellular signaling regulators. Rheb is a member of the Ras-superfamily GTPases. Rheb has been shown to interact with C-Raf, Mammalian target of rapamycin (mTOR), TSC2, Ataxia telangiectasia mutated (ATM), KIAA1303 and Ataxia telangiectasia and Rad3 related (ATR).

Immunogen: Recombinant full length protein of active Rheb.

Tested applications: IP, IHC

Recommended dilutions:

1 μ g for 1~2 mg total cellular proteins for IP;

1:100 dilution for IHC

Concentration: 1 mg/ml

Host: mouse

Clonality: Monoclonal

Isotype: IgM

Purity: Purified from ascites

Format: Liquid

Storage buffer:

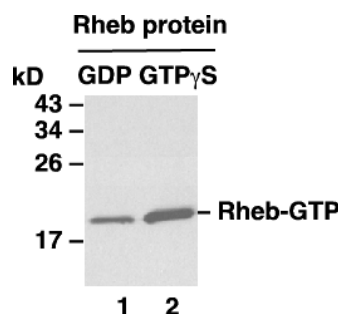
Preservative: no

Constituents: PBS (without Mg^{2+} and Ca^{2+}), pH 7.4, 150 mM NaCl, 50% glycerol

Species Reactivity: Anti-active Rheb antibody recognizes active Rheb of vertebrates.

Storage Conditions: Store at $-20^{\circ}C$. Avoid freeze / thaw cycles

Immunoprecipitation/Western blot



IP: anti-active Rheb mAb

WB: anti-Rheb pAb

Rheb activation assay. Purified Rheb proteins were immunoprecipitated after treated with GDP (lane 1) or GTP γ S (lane 2). Immunoprecipitation was done with the anti-active Rheb monoclonal antibody (Cat. No. 26910). Immunoblot was with an anti-Rheb rabbit polyclonal antibody (Cat. No. 21098).